



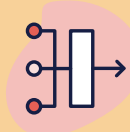
# How we can help you analyse waiting lists and prioritise patients

Our business intelligence system produces a dashboard which can let you analyse waiting lists and prioritise patients.

**With our Single Patient Treatment List dashboard, you gain rapid access to a system-level view of patients waiting which can be interactively analysed to present insight and opportunity.**

You can create customisable views using multiple data sets, including both NHS and independent sector providers.

The dashboard can help you to understand and prioritise patients on multiple pathways, detect any unnecessary follow-ups and monitor did-not-attends (DNAs) / cancellations whilst identifying health inequalities within waiting lists.



## How we do it

This powerful dashboard provides a single view based on the whole integrated care system (ICS).

Patients who are waiting are profiled by length of wait and grouped into recognisable cohorts, for example, over 18 weeks' wait, over 52 weeks', over 65 weeks' and over 105 weeks' wait.

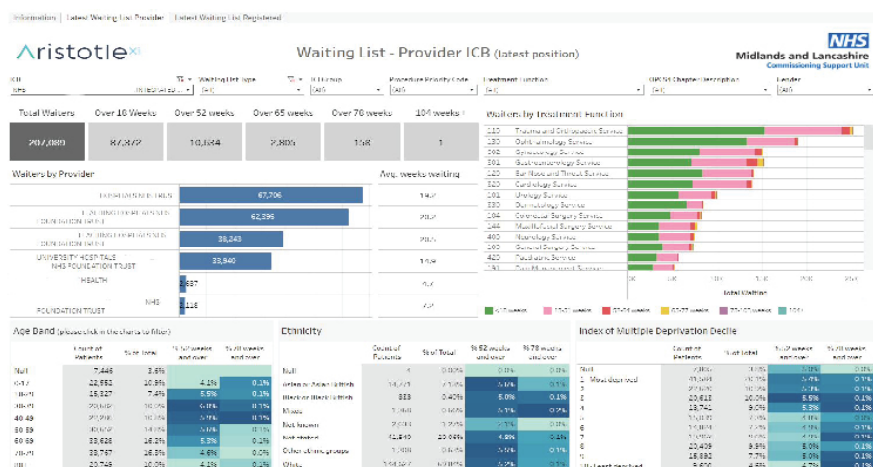
Data is refreshed weekly incorporating the latest submission from each provider with the length of the Referral to Treatment pathway calculated following national guidance. Users can then analyse the data at provider and registered population sub-integrated care board (ICB) level.

Our expert team will provide full training and support materials and can mobilise a solution on average in 8-12 weeks.

## Provider view

At this level, the dashboard shows the full waiting list (regardless of where the patient lives) for a selected provider or group of providers, mapped to an ICS based on geographical location. Data is fully interactive and can be broken down by a combination of multiple factors including:

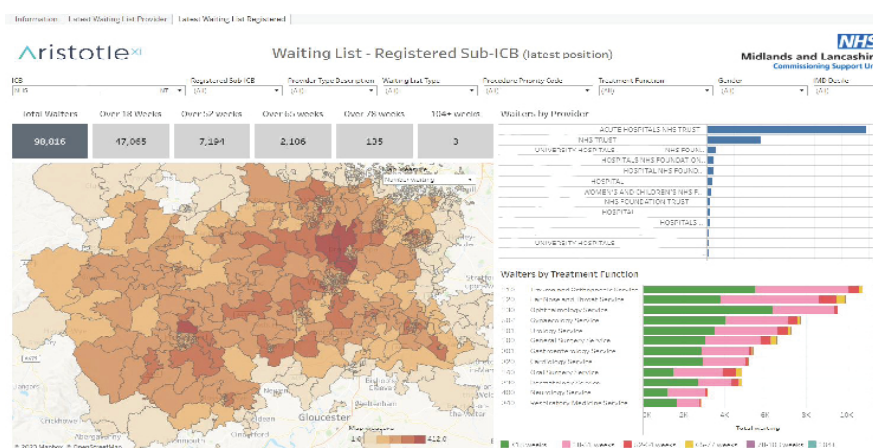
- Waiting list type
- Treatment function (sub-speciality)
- Procedure priority code
- Age
- Gender
- Ethnicity
- Index of multiple deprivation.



### Registered population sub-ICB view

At this level, the dashboard allows analysis of patients registered with GPs in the ICB and includes those waiting with independent sector and out-of-area providers. This does not show the full waiting list for that provider, only the ones activity commissioned by relevant ICBs within an ICS. This dashboard allows:

- Analysis by sub-ICB plus a range of indicators
- Geographical breakdown based on the Lower Super Output Area (LSOA) of residence of the patient.



## Other uses

In addition to the above views, the **Single Patient Treatment List** dashboard solution can be tailored to your specific needs including:

- Clock start / stops
- Diagnostics
- Patients on multiple pathways with the same provider / multiple providers
- DNAs and cancellation rates
- Admission methods
- Consultant identifiers
- Commissioner ID.

## Elective care offer

Find out more about how we can support elective / planned care on our [Clinical Redesign and Provider Collaboration](#) page.

For more information on our products and services contact us today:

**Email:** [mlcsu.partnerships@nhs.net](mailto:mlcsu.partnerships@nhs.net)

**mlcsu.co.uk**